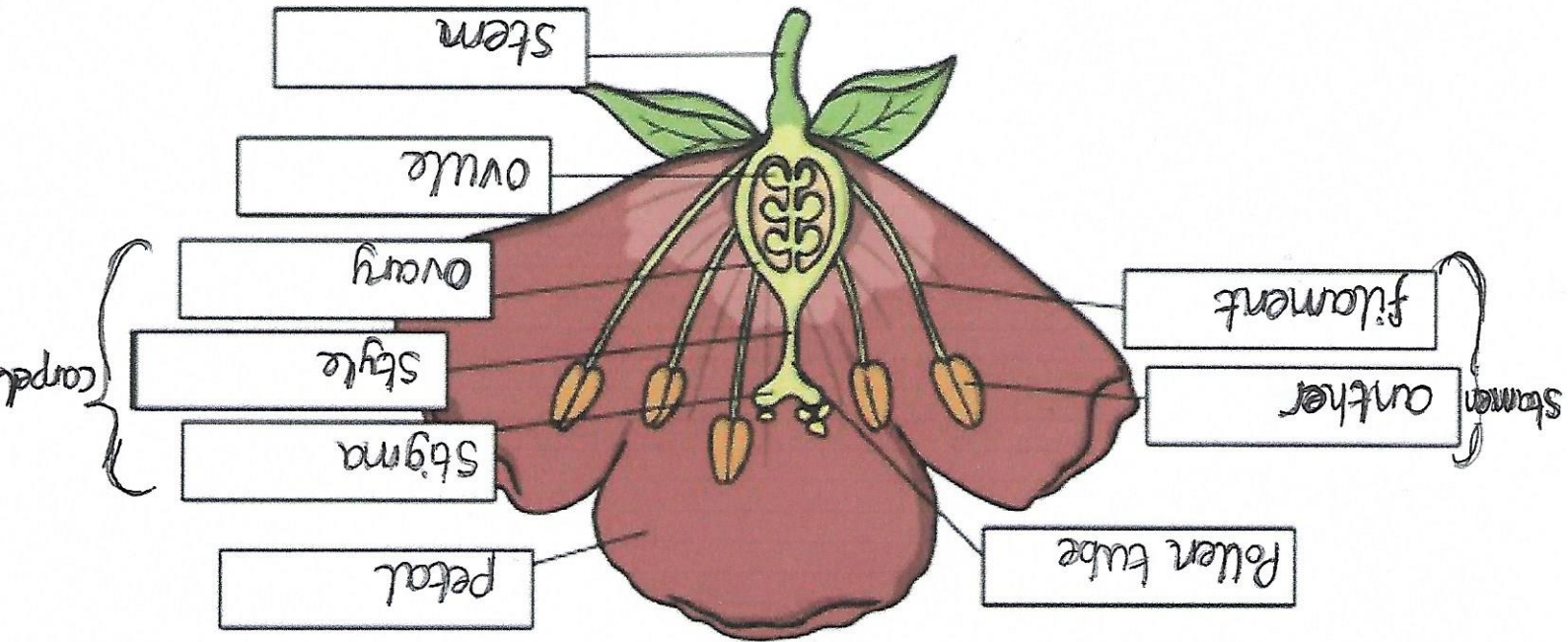


Parts of a Flower

Label the parts of the flower below and then write a summary of the function of each part in the boxes below.



<p><u>Stem</u> Holds up the plant and transports water to the leaves.</p>	<p><u>Pollen tube</u> Transports the male gametes from the pollen down the style to the ovary.</p>	<p><u>Petal</u> Often brightly coloured or sweetly scented to attract male insects.</p>
<p><u>Style</u> A female part of the flower. Pollen travels down the style to the ovary.</p>	<p><u>Stigma</u> A female part of the flower. It is sticky so it catches catches pollen grains easily.</p>	<p><u>Ovary</u> A female part of the flower containing the ovules.</p>
<p><u>Flamane</u> A male part of the flower. It holds up the anther.</p>	<p><u>Ovule</u> The female gamete. If an ovule fuses with a grain of pollen, a new seed will form.</p>	<p><u>Anther</u> A male part of the flower. It makes the pollen a yellow powder containing the male gametes.</p>